



An ISO 9001-2015 Certified Company

Plot A-49B, T.T.C. Industrial Area, MIDC Mahape, Navi Mumbai - 400 710, India

Tel.: 97691 22842 / 97691 92843 / 98210 20774

Email: info@superflowpumps.com • Website: www.superflowpumps.com



INTRODUCTION & COMPANY PROFILE

At the outset,

We are pleased to introduce ourselves as one of the leading indigenous manufacturer of various type of Centrifugal Pumps with a modern outlook and committed to "Make in India" mission.

Superflow Pumps Private Limited is an ISO 9001 – 2015 Accredited company.

We are involved in manufacturing of various and wide range of Chemical Processing Pumps, Self – Priming Pumps, Molten Sulphur Pumps, Vertical Sump Pump, High Temp. Pumps and API 610 11th Edition Pumps.

Our manufacturing plant is located at Mahape MIDC, Navi Mumbai, Maharashtra state. The state – of – Art manufacturing plant is well equipped with modern machineries & testing facilities to produce & meet the Indian and Overseas standards & specification.

We have been serving many Indian reputed Public Sector Units such as HPCL, RCF, IOCL, NPCIL, BARC and many other Overseas Companies like Oman Formaldehyde Chemical Company LLC, Sultanate of Oman; M/s. Sprea Misr for Chemicals & Plastics for World's one of the largest SNF Plant; M/s. National Company for Sulphur Products, Saudi Arabia for newly installed Formaldehyde, SNF and Resin Plants; M/s. Saudi Universal Petrochemical Industrial Chemicals and M/s. Industrial Chemicals & Resins Co. (ICR) many more.

Also, we are serving reputed MNCs from Pharmaceutical, Fertilizers, Chemical, Petrochemicals, Oil Extraction, Solvent Extraction, STP, ETP, WTP, etc.

We would be glad to serve you with our highly engineered product range for all your requirements.

Warm Regards,

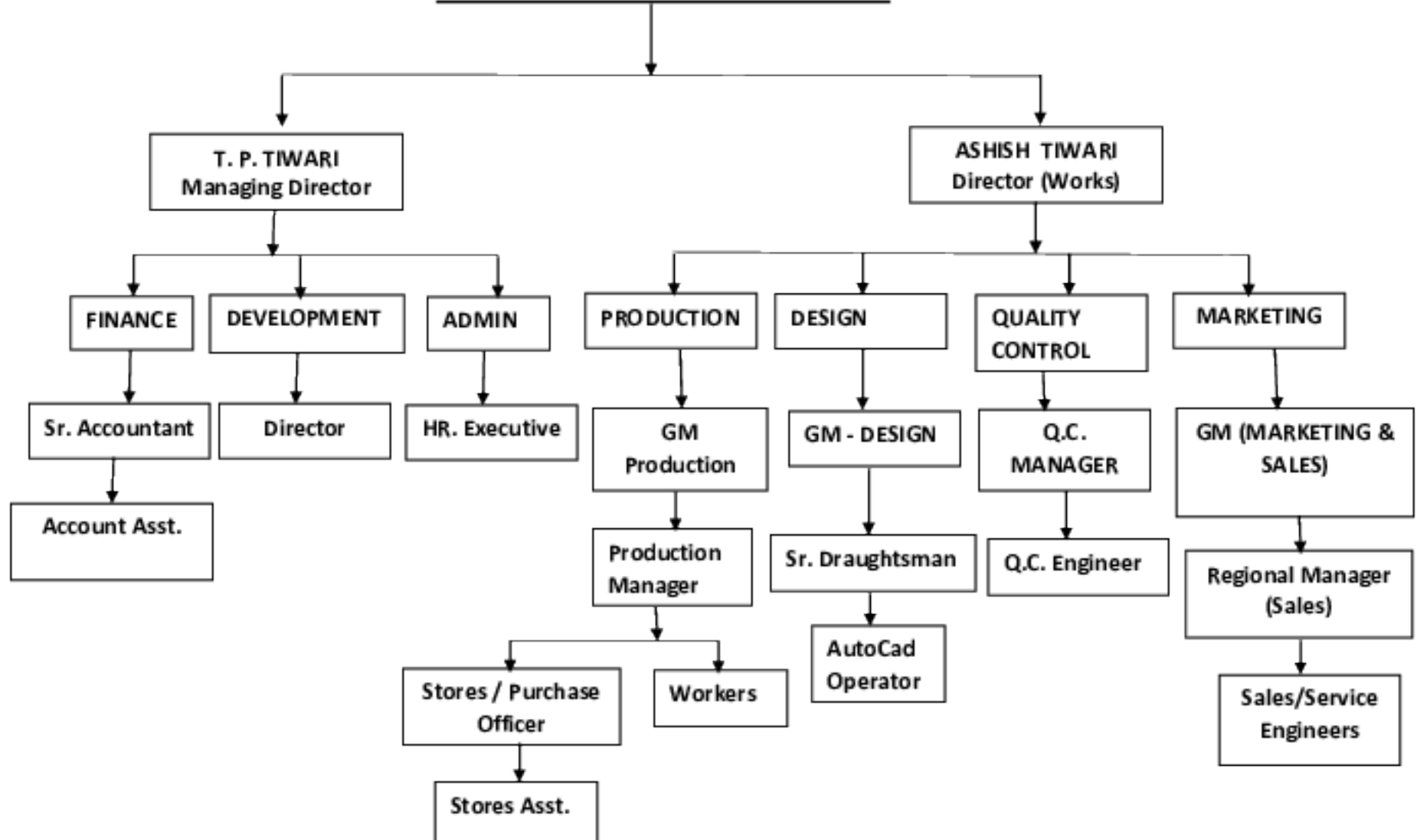
For SUPERFLOW PUMPS PVT. LTD.

T.P. TWARI

Managing Director

Organization Chart

SUPERFLOW PUMPS PVT. LTD.



AGSI CERTIFICATION PRIVATE LIMITED

CERTIFICATE OF REGISTRATION

This is to certify that the Quality Management System of:

SUPERFLOW PUMPS PVT. LTD.

PLOT NO. A - 488, T.T.C. INDUSTRIAL AREA, M.L.D.C., MAHAPE, NAVI MUMBAI - 400710,
MAHARASHTRA, INDIA.

has been assessed and
approved to the requirements
of standard :

ISO 9001 : 2015

The Quality Management System applies to :

**DESIGN, MANUFACTURE & SUPPLY OF
CENTRIFUGAL PUMPS**

Certificate No.: QM00521000000170

Valid from: 09-10-2021

Valid upto: 08-10-2024*

Client File No.: AGSI/Q/3362

Dt. Originally Certified Dt.: 09-10-2018



For AGSI Certification Pvt. Ltd.

A handwritten signature in black ink, appearing to read 'Mona Desai'.

(Mona Desai)

Director

02.12.2021

Registered Office : 208, Kartik Complex, Opposite Laxmi Industrial Estate,
New Link Road, Andheri (West), Mumbai - 400053, India.

Email: agsicert@gmail.com, Website : www.agsicertification.in

The document remains the property of AGSI-CPL. This approval is subject to the organization maintaining its system to the requirements of the standard as monitored by AGSI-CPL.

*Subject to yearly re-approval by AGSI-CPL on surveillance assessments. Due date for re-approval: 09.10.2022.

*To verify the validity status of this certificate refer to the online global database : <https://www.iafcertsearch.org>



An ISO 9001-2015 Certified Company

Plot A-498, T.T.C. Industrial Area, MIDC Mahape, Navi Mumbai - 400 710, India

Tel.: 97691 22842 / 97691 92843 / 98210 20774

Email: info@superflowpumps.com • Website: www.superflowpumps.com



LIST OF MACHINERY & EQUIPMENT

SR.NO.	Types of Machine	Manufacturer/ Make	Machine Capacity	QTY
1	CNC Vertical Turning Lathe Machine LTV55 (X axis travel- 560mm, Z axis travel- 400mm, Chuck size- 350mm)	Lakshmi Machine Works	3 Phase, 35 KVA	1 NO
2	CNC Lathe Machine - LL25TL10 (X axis travel- 280mm, Z axis travel - 950mm, Chuck size- 250 mm)	Lakshmi Machine Works	3 Phase, 28 KVA	1 NO
3	CNC Lathe Machine - LL25TL5 (X axis travel - 260mm, Z axis travel- 450 mm, Chuck size - 250mm)	Lakshmi Machine Works	3 Phase, 25 KVA	1 NO
4	CNC Lathe Machine LT-20C Classic (X axis travel - 370mm, Z axis travel - 555mm, Chuck size- 300mm)	Ace Designers Ltd.	3 Phase, 25 KVA	1 NO
5	CNC Lathe Machine LL30TL7 (X axis travel - 366 mm, Z axis travel- 600mm, Chuck size- 300mm)	Lakshmi Machine Works	3 Phase, 25 KVA	1 NO
6	CNC Vertical Machining Centre MCV-450 (X axis travel- 750mm, Y axis travel- 430mm, Z axis travel- 460mm)	Ace Manufacturing System Ltd.	3 Phase, 25 KVA	1 NO
7	CNC Vertical Machining Centre JV55 (X axis travel- 575mm, Y axis travel- 410mm, Z axis travel- 460mm, 4th axis - 0 to 360 degree rotation)	Lakshmi Machine Works	3 Phase, 25 KVA	1 NO

LIST OF MACHINERY & EQUIPMENT

SR.NO.	Types of Machine	Manufacturer/ Make	Machine Capacity	QTY
8	CNC Vertical Machining Centre CVM-800 (X axis travel- 800mm, Y axis travel- 500mm, Z axis travel- 500mm, 4th axis - 0 to 360 degree rotation, 5th axis - 0 to 180 degree rotation)	Cosmos Impex	3 Phase, 25 KVA	2 NOS
9	Lathe Machine	Accurate Machine Tools	3 Phase, 3 HP, 1450 RPM	1 NO
10	Lathe Machine	Accurate Machine Tools	3 Phase, 3 HP, 1450 RPM	1 NO
11	Lathe Machine	Accurate Machine Tools	3 Phase, 3 HP, 1450 RPM	1 NO
12	Lathe Machine	Accurate Machine Tools	3 Phase, 3 HP, 1450 RPM	1 NO
13	Lathe Machine	PECO	3 Phase, 3 HP, 1450 RPM	1 NO
14	Lathe Machine	CMT	3 Phase, 3 HP, 1450 RPM	1 NO
15	Lathe Machine	(Omega) Nagi Engineers	3 Phase, 5 HP, 935 RPM	1 NO
16	Lathe Machine	Punjab Machinery	3 Phase, 5 HP, 925 RPM	1 NO
17	Radial Drill Machine	Energy	2 HP & 0.5 HP, 1450 RPM	1 NO
18	Radial Drill Machine	Energy	5 HP & 2 HP 1450 RPM	1 NO
19	Drilling Machine	Thakur SM-25	3 Phase, 1 HP, 1400 RPM	1 NO
20	Drilling Machine	Suraj VPM Engineering	3 Phase, 1 HP, 1400 RPM	1 NO
21	Milling Machine	Bhagson	3 Ph, 7.5 HP, 1450 RPM	1 NO
22	Slotting Machine	Accurate Machine Tools	3 HP, 1450 RPM	1 NO
23	Compressed Pump Testing	Krishna Instruments	-	1 NO
24	Welding Transformer	Parul Corporation	300 A, 15 KVA	1 NO
25	Welding Transformer	EDS Pvt. Ltd.	300 A, 15 KVA	1 NO
26	Bench Grinder	(Elmaco) Vijay Machine Tools Pvt. Ltd.	0.75 HP, 2900 RPM	1 NO
27	Bench Grinder	(Elmaco) Vijay Machine Tools Pvt. Ltd.	0.75 HP, 2900 RPM	1 NO
28	Bench Grinder	(Elmaco) Vijay Machine Tools Pvt. Ltd.	0.75 HP, 2900 RPM	1 NO
29	Balancing Machine	Proteq	3 Phase, 2 HP, 1415 RPM	1 NO
30	Balancing Machine (Vertical)	Krystal	3 Phase, 1 HP, 960 RPM	1 NO
31	Band Saw Machine	Santosh	3 Phase, 0.5 HP, 1380 RPM	1 NO
32	Flexible Grinder	Wolf Make	1 Phase, 0.5 HP, 350 RPM	1 NO
33	Hand Grinder	Kulkarni Power Tools	1 Phase, 0.25 HP, 350 RPM	1 NO
34	Hand Drill Machine	Kulkarni Power Tools	1 Phase, 0.25 HP, 350 RPM	1 NO

SUPERFLOW API PUMP

It's our great pleasure to introduce our Superflow API Pumps made by using latest technology and softwares. There is general belief among Chemical and Petrochemical industry fraternity about API class of pumps is high cost, as compared to ANSI or ISO class pumps. Yes, it is true. However, this is not the complete story. They also recognize that API pumps are way superior in respect of safety aspects, reliability and life cycle cost. In current scenario of Petrochemical and Chemical process plants to take full advantage of economy of scales, it is further recognized that on account of unforeseen or even frequently planned outages cost industry dearly, and added investment is easily recovered by reliability and longer MTBF/MTBM of API Pump.

API pumps are characterized by main distinguishing factors like-

- A) High pressure ratings of the fluid containment enclosure of casings (Min. pressure rating of 40 Bars).
- B) Centerline support to eliminate effect of high temperature operation on displacement of pump centerline in vertical plane.
- C) Bearing life of 25000 Hrs. plus (approx. 3 yrs)
- D) Higher allowable nozzle loads, reducing pressure on piping in respect of stress relieving expansion joints/ loops.
- E) Rigid base plates, with complete fills inside the cavity of baseplates, provides solid heavy foundation, and keeps vibration levels to lowest possible limit.
- F) Balancing of rotating components to within G1.0 grade.
- G) Limiting operating vibration levels to within 2.5 mm/s-RMS
- H) Using stronger shafts to keep deflections to much lower values, thus improving Bearing and seal life. Stiffer shafts permit lower wear ring clearances, thus improving hydraulic efficiencies.

Superflow API Pumps Design philosophy:-

- ⇒ Manufacturing API Pumps at Superflow, begins with 2 D design, based on process specifications, followed by CFD and FEA analysis, unlike conventional method of selection from preset model families.
- ⇒ With advent of newer technologies, design activity, followed by CAD/CAM technology for Pattern/ Die resulting in smooth and blow hole-free investment castings.
- ⇒ We can supply completely tailor made pumps exactly to meet your service parameters within 3-4 months at a very reasonable price.
- ⇒ Superflow has adopted oil lubrication using well sized oil sump, that permits good air cooling through fins on the sump. For high temperature services (above 350C.) finned oil cooler is provided as a bayonet exchanger.
- ⇒ NDE bearings are selected as roller bearings with much higher radial load capability, and DE bearings are back to back angular contact bearings. For higher temperature service higher clearance bearings are selected. Needless to state that the Bearings are sized to ensure L10 life of more than 25000 Hrs.
- ⇒ Superflow supplies all pumps with latest API 682 Super Mechanical Seal (SMS) manufactured by our sister concern with lifetime support guarantees. SMS seals are Internationally well proven, and technically equivalent / superior in performance in comparison to well known makes like John Crane, Flowserve and Eagle-Bergmann etc.
- ⇒ For high temperature services, steam tracing with heat transfer cement is provided on the casing to ensure that the casing is maintained close to operating temperature to avoid sudden heat stress at start up of the pump. Needless to say, these pump casings have to be insulated with Mineral wool, encased in a easily openable aluminum encasement to be provided by Client at site.

We assure you that with the above latest features our Superflow API Pumps will provide you utmost satisfaction with care free operational life.

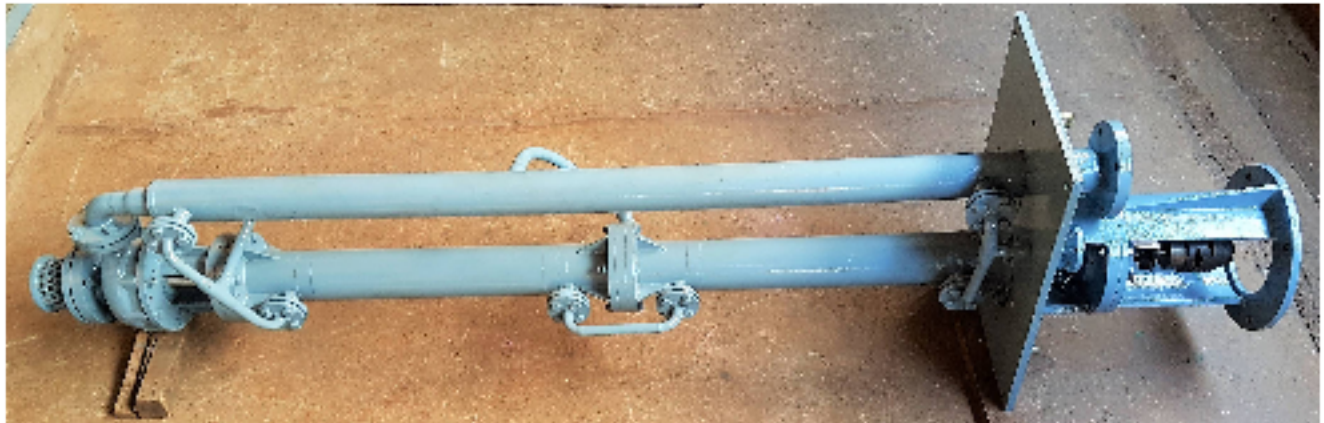
SUPERFLOW API PUMP



SUPERFLOW VERTICAL MOLTEN SULFUR PUMP

Sulfuric Acid is widely produced using Solid sulfur as raw material. Sulfur is sourced either from refineries or as a mineral. Solid sulfur in the form of molten is a first step in the manufacture of Sulfuric acid and to be fed to the furnace for production of Sulfur dioxide. Solid sulfur, as molten behaves anomalously and characterizes high viscosity at temperature outside temperature range of about 140 to 160 C. And that is the reason the sulfur pump design needs to ensure that the molten sulfur being pumped is maintained within this close temperature range.

1. Superflow Pumps are specially designed steam jacketed Vertical pumps, with jackets so arranged that neither supercooling nor overheating takes place and ensuring jacket heating at very close to steam saturation temperature.
2. In this context it is noteworthy that the steam supply to the jacket heating requires proper pressure control and user is strongly advised to install a PRV in the steam line, and pressure must be maintained within a range of 2.5 ~ 4.5 Barg.
3. Superflow Pumps with speeds of 960, 1450 & 2950 RPM are available depending upon the service conditions.
4. Superflow Pumps are designed with adequate shaft sizing to ensure that the deflections and critical speeds are well within acceptable range and no resonance is experienced during operation.
5. Special arrangement is incorporated to provide molten liquid sulfur for lubrication of the intermediate line bearings, with protection from blockage during outage.



Pump Design Key Features:-

- ⇒ Materials of Construction: Wetted end parts are constructed of ductile iron with steel support column and discharge pipe.
- ⇒ Bearing Materials: Carbon Graphite impregnated with babbitt or antimony are used to resist temperatures up to 200°C. Bearing are lubricated by the product Molten Sulphur itself.
- ⇒ The support column and discharge pipe are steam jacketed. Steam supply and condensate return connections are located above the support plate. Annular space around the pipe passage through the support plate is adequately sealed to avoid vapour leaks around the pump power assembly.
- ⇒ Couplings: Flexible all metal non-spacer couplings are recommended, as nonmetallic flexible elements are susceptible to aging in sulfurous atmosphere.
- ⇒ Motors: Standard TEFC are generally used. Any enclosure can be considered. We recommend "F or H" insulation to ensure that the motor insulation is sufficiently heat resistant.
- ⇒ Shaft sealing is provided with PTFE packing duly lubricated with grease through a grease cup.
- ⇒ Power assembly comprises of a double row thrust bearing, grease lubricated, through a grease cup.

SUPERFLOW HIGH TEMPERATURE PUMP

Chemical and petrochemical industries often require pumps to handle liquids at high temperatures. High temperature in the industrial practice means the temperature that range from 100 ° C to as high as 350° C.

High temperature operation also has to address the high vapour pressure of the liquids being handled. Oxidation takes place when it comes in contact with atmospheric oxygen resulting in coking, formation of inflammable vapours and at times formation of explosive mixtures reacting with atmospheric oxygen.



In order to address various demanding requirements emanating from high temperature operation, following are some of the key features to be considered in pump design.:-

1. Heating of the pump from atmospheric condition to the operating high temperature of the liquids results in considerable linear expansion of the pump casing, shaft and other wetted parts. Centerline support of casing for temperature above 200° C. is an Industry norm, to negate the change in alignment between driver and pump.
2. Differential thermal expansions calls for careful selection of running clearance for wetted mating parts.
3. Consideration of steam Jacketing of pump casing to bring temperature considerably down, so as to enable hot start-up of pumps, where desired.
4. When Pump Operates at high temperature then pump and motor alignment protocol to be reasonably established to account for changes in position of drive motor shaft centerline and pump shaft centerline.
5. We provide Jacketed stuffing box cooling, proper venting of stuffing box to avoid vapour blocking, and eventual dry running of seals and causing damage.

6. Installation of suitable cooling system for bearing housing with fins cooling, heat shield/deflectors, and cooling fans in some cases as needed.
7. For high temperature liquids operating near boiling point at the operating pressure condition, NPSH margin consideration is inevitable to avoid cavitation.

Superflow Key Design Features Of High Temperature Pumps :-

Materials of Construction: Wetted end parts are selected with due consideration of high temperature, strength and corrosion resistance.

Bearing Selection: Antifriction bearings are carefully selected with appropriate clearance class to ensure that bearings run smooth even at elevated temperatures.

Mechanical seals: Seal is provided with appropriate venting and flushing with cooled liquid (If so deemed necessary) applying Plan 11. This ensures that the seal chamber is maintained at a pressure slightly higher than suction pressure and ensures margin over the boiling point and avoids vapour formation and of course serves to carry away heat generated in the chamber. Plan 62 if so required provides for air blanketing, and dilution of trace leaks of the liquid. Thermosyphon and many other accessories are used as per different suitable API Plans.

On specific demand, Superflow pumps are provided with water cooling for the centerline supports to avoid linear rise of supports due to convective heating from hot casing.

Welded jackets or steam tracing tubing with heat transfer cement is provided on the casing to ensure that the casing is maintained close to operating temperature to avoid sudden heat stress at start up of the pump. Needless to say, these pump casings have to be insulated with Mineral wool, encased in a easily openable aluminum casing.

These Pumps are successfully performing in local and global market for high temperature services in chemicals and Petrochemical industries with entire satisfaction.

Superflow Pump Parts Machined Using Latest Technology.



An ISO 9001-2015 Certified Company

Plot A-49B, T.T.C. Industrial Area, MIDC Mahape, Navi Mumbai - 400 710. India

Tel.: 97691 22842 / 97691 92843 / 98210 20774

Email: info@superflowpumps.com • Website: www.superflowpumps.com





An ISO 9001-2015 Certified Company

Plot A-49B, T.T.C. Industrial Area, MIDC Mahape, Navi Mumbai - 400 710. India

Tel.: 97691 22842 / 97691 92843 / 98210 20774

Email: info@superflowpumps.com • Website: www.superflowpumps.com





An ISO 9001-2015 Certified Company

Plot A-49B, T.T.C. Industrial Area, MIDC Mahape, Navi Mumbai - 400 710. India

Tel.: 97691 22842 / 97691 92843 / 98210 20774

Email: info@superflowpumps.com • Website: www.superflowpumps.com



LIST OF CLIENTS

LOCAL								
Sr. No.	Party	Model	Qty. (Nos.)	MOC	Liquid	Temp.	Q (MF/Hr.)	H (Mtr.)
1	Tex Fab Engg.	80 x 50-260	02	CF8M	Dye Liquor	140 ^o C	15	40
		250 x 200-315	02	CF8M	Dye Liquor	140 ^o C	750	15
2	Fitwell Engg. Co.	150 x 125-250	08	CF8M	Sea Water	Amb.	326	8
3	Sunil Solvent & Extraction	50 x 25-225	01	CF8M	Solvents	70 ^o C	5	70
4	Sunmarco Engg.	250 x 200-315H	02	CF8M	Dye Liquor	140 ^o C	1200	12
5	Narmada Chematur Petrochemical Ltd.	32 x 25-180	01	CF8M	Effluent	Amb.	9.5	6
6	Diana Tex Engg.	150 x 125-250	03	CF8M	Dye Liquor	140 ^o C	200	15
		250 x 200-315	02	CF8M	Dye Liquor	140 ^o C	900	12
7	Perfect Indl. Services	32 x 25-180	04	CF8M	Sulphuric Acid	Amb.	16.5	20
8	Ind Agro Synergy Ltd.	150 x 125-250	09	C.I.	Effluent	Amb.	120	8
9	Nandan Ghee & Oil Industries	32 x 25-180	02	CF8M	Solvent	Amb.	5	35
10	Sharp Engg.	40 x 25-160	02	C.S.	Degumming Oil	Amb.	3	20
11	RCF, Chembur	40 x 25-150	04	CF8M	Lube Oil	100 ^o C	15	20
12	Ranbaxy Ltd.	32 x 25-180	06	Alloy 20	Sulphuric Acid	Amb.	5	30
13	Shree Fats & Proteins Ltd.	40 x 25-200	02	CF8M	Fatty Acid	80 ^o C	10	55
14	Vinayak Agrotech Ltd.	40 x 25-150	02	C.S.	Solvents	190 ^o C	10	20
15	Nitin Trading Co.	32 x 25-180	01	CF8M	Carbon Slurry	95 ^o C	5	25
16	Resource Combine Soln.	100 x 80-250	01	CF8M	Hot Water	95 ^o C	80	15
17	Jayant Brothers	40 x 25-200	01	CF8M	Butanol / Octanol	Amb.	7	12
18	Exide Industries Ltd.	40 x 25-160	01	CF8M	H ₂ SO ₄	Amb.	10	18
		80 x 40-150	02	Alloy 20	H ₂ SO ₄	Amb.	25	15

Sr. No.	Party	Model	Qty. (Nos.)	MOC	Liquid	Temp.	Q (MF/Hr.)	H (Mtr.)
19	Pratibha Synted	40 x 25-200	01	CF8M	Colouring Agents	70°C	8.5	15
20	Om Shree Agro Industries	40 x 25-200	01	CF8M	Vegetable Oils	75°C	3	60
21	Nirma Ltd.	100 x 80-250	01	CD4MCU	H ₂ SO ₄ Slurry	60°C	80	20
22	Gujarat Ambuja Exports	50 x 25-225	01	CF8M	Bleacher Oil Slurry	Amb.	20	70
23	Vinay Solvent Ltd.	40 x 25-150	01	C.I.	Solvents	90°C	5	20
24	Seemsan Pumps & Equipments	32 x 25-180	06	Alloy 20	H ₂ SO ₄	50°C	5	35
		32 x 25-180	04	CF8M	Nitric Acid	40°C	3	25
		40 x 25-200	02	CF8M	Acetic Acid	50°C	5	50
25	Godavari Drugs Ltd	40 x 25-150	01	CF8M	Acidic Water	40°C	3	25
26	Gurunanak Ext.	32 x 25-180	02	CF8M	Fatty Acid	90°C	5	38
27	Nipa Commercial Corp.	80 x 40-200	01	CF8M	Turpentine Sludge	400C	27	40
28	Ion Exchange Ltd.	100 x 80-160	01	C.I.	Raw Water	Amb.	100	25
29	Excell Eng. Fab Ltd	32 x 25-180	02	C.I./CF8M	Alkali	Amb.	5	40
30	Shakti Textile Ltd.	150 x 125-260	01	CF8M	Dye Liquor	140°C	130	15
31	Shriram Alkali Ltd.	125 x 100-200	01	CF8M	35 % NaOH	76°C	90	12
32	Gulshan Polyols Ltd.	64 Nos. (List Enclosed)						
33	Gujarat Ambuja Ltd.	80 x 40-200	03	CF8M	Edible Oil	80°C	30	35
34	Indraprastha Power Generation Ltd.	40 x 25-200	02	CF7M	94-98% H ₂ SO ₄ .	40°C	10	10
35	Narmada Chematur Petrochemical Ltd.	80 x 40-200	02	CF3M	Sludge	60°C	20	12
36	Goa Carbonic Ind. Pvt. Ltd.	32 x 25-180 C	01	CF8M	CO ₂	-30°C	12.5	40
37	Patel Engg. Ltd.	150x125-315CPR	15	CI/CF8M	Muddy Water	Ambie nt	180	33
38	Viral Alkalies Ltd.	250 x 200 - 315 SP	01	Alloy 20	NaOh + Potash	1600C	400	6

M/s. LIBRA TECHCON LTD – For Export to Saudi Arabia

PUMP NO.	TAG NO.	MODEL	MOC	FLUID	TEMP.	RPM	SEAL SIZE	FACE
991683/07	P-101	65X40-200 C	CF8M	WATER	5 to 50 degC	3520	1.375"	CAR/TC
991684/07	P-102	125X100-250 C	CF8M	WATER	5 to 50 degC	1750	1.75"	CAR/TC
991685/07	P-103	80X50-125 C	CF8M	WATER	5 to 50 degC	3520	1.375"	CAR/TC
991686/07	P-104	80X50-125 C	CF8M	ADDITIVES	5 to 50 degC	3520	1.375"	CAR/TC
991687/07	P-105	80X50-125 C	CF8M	LIGNO SOLN	5 to 50 degC	3520	1.375"	CAR/TC
991688/07	P-106	80X50-125 C	CF8M	SNF. SOIN	5 to 50 degC	3520	1.375"	CAR/SiC
991689/07	P-108	80X50-125 C	CF8M	OIL	90 degC	3520	1.375"	CAR/TC
991690/07	P-109	80X50-125 C	CF8M	DIESEL	5 to 50 degC	3520	1.375"	CAR/TC
991691/07	P-110	80X50-125 C	CF8M	SOLVENT	5 to 50 degC	3520	1.375"	CAR/TC
991692/07	P-111	80X50-125 C	CF8M	SOLVENT	5 to 50 degC	3520	1.375"	CAR/TC
991693/07	P-112	80X50-125 C	CF8M	DEINISED WATER	5 to 50 degC	3520	1.375"	CAR/TC
991694/07	P-113	80X50-125 C	CF8M	DEINISED WATER	5 to 50 degC	3520	1.375"	CAR/TC
991695/07	P-114	100X65-125 C	CF8M	ADDITIVES	5 to 50 degC	3520	1.375"	CAR/TC
991696/07	P-115	100X65-125 C	CF8M	ADDITIVES	5 to 50 degC	3520	1.375"	CAR/TC
991697/07	P-116	100X65-125 C	CF8M	ADDITIVES	5 to 50 degC	3520	1.375"	CAR/TC
991698/07	P-117	80X50-125 C	CF8M	SOLVENT PROD.	5 to 50 degC	3520	1.375"	CAR/TC
991699/07	P-118	80X50-125 C	CF8M	DEINISED WATER	5 to 50 degC	3520	1.375"	CAR/TC
991700/07	P-119	80X50-125 C	CF8M	DEINISED WATER	5 to 50 degC	3520	1.375"	CAR/SiC
991701/07	P-120	80X50-125 C	CF8M	DEINISED WATER	5 to 50 degC	3520	1.375"	CAR/SiC
991702/07	P-121	80X50-125 C	CF8M	LIGNO SNF	5 to 50 degC	3520	1.375"	CAR/TC
991703/07	P-122	80X50-125 C	CF8M	SOLVENT PROD.	5 to 50 degC	3520	1.375"	CAR/TC
991704/07	P-126	80X50-125 C	CF8M	SOLVENT PROD.	5 to 50 degC	3520	1.375"	CAR/TC
991705/07	P-123	125X100-250 C	CF8M	FINISHED ADDITIVES	5 to 50 degC	1720	1.375"	CAR/TC
991706/07	P-128	125X100-250 C	CF8M	FINISHED ADDITIVES	5 to 50 degC	1720	1.375"	CAR/TC
991707/07	P-124	80X50-250 C	CF8M	ADDITIVES	5 to 50 degC	1720	1.75"	CAR/TC
991708/07	P-129	80X50-250 C	CF8M	ADDITIVES	5 to 50 degC	1720	1.75"	CAR/TC
991709/07	P-125	80X50-125 C	CF8M	FINISHED ADDITIVES	5 to 50 degC	3520	1.375"	CAR/TC
991710/07	P-127	80X50-125 C	CF8M	FINISHED ADDITIVES	5 to 50 degC	3520	1.375"	CAR/TC
991711/07	P-130	80X50-125 C	CF8M	FINISHED ADDITIVES	5 to 50 degC	3520	1.375"	CAR/TC
991712/07	P-131	80X50-125 C	CF8M	FINISHED ADDITIVES	5 to 50 degC	3520	1.375"	CAR/TC
991200/03	P-1003 A/B	32x25-180	CF8M	MOTHER LIQUOR	50° C	3520	1.125"	SiC/SiC
991201/03	P-1104 A/B	32x25-180	CF8M	MOTHER LIQUOR	50° C	3520	1.125"	SiC/SiC
991202/03	P-1104 A/B	125x100-200	CF8M	EJECTOR WATER	37° C	3520	1.75"	CAR/SiC
991203/03	P-1107 A/B	125x100-200	CF8M	EJECTOR WATER	37° C	3520	1.75"	CAR/SiC
991204/03	A/B	80x40-150 SPL	CF8M	HEXALYE	50° C	3520	1.375"	CAR/SiC

M/s. SAUDI FORMALDHYDEDE CHEMICAL CORPORATION LTD – Saudi Arabia

PUMP NO.	MODEL	MOC	FLUID	TEMP.	HEAD	SEAL SI ZE	FACE
991045/02	80x40-150	CF8M	SNF/SMF	45° C	15M	1.375"	TC/SiC
991046/02	80x40-150	CF8M	SNF/SMF	45° C	15M	1.375"	TC/SiC
991047/02	80x40-150	CF8M	SNF/SMF	45° C	15M	1.375"	TC/SiC
991048/02	80x40-150	CF8M	SNF/SMF	45° C	15M	1.375"	TC/SiC
991052/03	80x40-150	CF8M	CONTAMINATED WATER	15° to 36° C	35M	1.375"	TC/SiC
991059/02	100x80-250	CF8M	URA FORMAL	20° to 37° C		1.75"	SiC/SiC
991060/02	100x80-250	CF8M	URA FORMAL	20° to 37° C		1.75"	SiC/SiC
991076/03	80x40-150	CF8M	CONTAMINATED WATER	15° to 36° C	35M	1.375"	TC/SiC
991077/02	80X65-125	CF8M	WATER SNF DRYER	15° to 40° C	30M	1.125"	CAR/TC
991078/02	80X65-125	CF8M	WATER SNF DRYER	15° to 40° C	30M	1.125"	CAR/TC
991123/03	80x40-150	CF8M	SNF/SMF	45° C	15M	1.375"	TC/SiC
991124/03	80x40-150	CF8M	SNF/SMF	45° C	15M	1.375"	TC/SiC
991182/02-03	80X50200SPL	CF8M	POLYNAPHTHALENE			2.0"	SiC/SiC
991183/02-03	80X50200SPL	CF8M	POLYNAPHTHALENE			2.0"	SiC/SiC
991270/04	80x50-150J	CF8M	NAPHTHALENE	100° C	40M	1.375"	TC/SiC
991271/04	80x50-150J	CF8M	NAPHTHALENE	100° C	40M	1.375"	TC/SiC
991584/06	65x50-160c	CF8M	PROCESS WATER	45 degC	60	1.375"	CAR/TC
991585/06	65x50-160c	CF8M	PROCESS WATER	45 degC	60	1.375"	CAR/TC
991586/06	40x25-150	CF8M	FILTRATE	90 degC	39.9	1.375"	CAR/TC
991587/06	40x25-150	CF8M	FILTRATE	90 degC	39.9	1.375"	CAR/TC

M/s. SAUDI DESIGNERS & ENGINEERS CONSULTANTS – Saudi Arabia

PUMP NO.	MODEL	MOC	FLUID	TEMP.	HEAD	SEAL SI ZE	FACE
991746/07	150X125-260K	CF3M	UREA FORMALDHYDRET	38° C		2.25"	CAR/ SiC
991747/07	150X125-260K	CF3M	UREA FORMALDHYDRET	38° C		2.25"	CAR/ SiC
991748/07	150X125-315C	CF3M	AQUIOUS FORMALDHYDE	61.1° C	40	1.75"	CAR/ SiC
991749/07	150X125-315C	CF3M	AQUIOUS FORMALDHYDE	61.1° C	40	1.75"	CAR/ SiC
991750/07	100X65-250C	CF3M	AQUIOUS FORMALDHYDE	76° C	15	1.75"	CAR/ SiC
991751/07	100X65-250C	CF3M	AQUIOUS FORMALDHYDE	76° C	15	1.75"	CAR/ SiC
991752/07	250X200-315C	CF3M	UREA FORMALDHYDE	47° C	15	2.5"	CAR/ SiC
991753/07	250X200-315C	CF3M	UREA FORMALDHYDE	47° C	8	2.5"	CAR/ SiC
991754/07	150X125-315C	CF3M	UREA FORMALDHYDE	76° C	8	1.75"	CAR/ SiC
991755/07	150X125-315C	CF3M	UREA FORMALDHYDE	76° C		1.75"	CAR/ SiC
991756/07	80X50-200C-SP	CF3M	UREA FORMALDHYDE	71° C		1.75"	SiC/TC
991757/07	80X50-200C-SP	CF3M	UREA FORMALDHYDE	71° C		1.75"	SiC/TC
991758/07	65X40-200C	CF3M	METHANOL FOR STORAGE	30° C		1.375"	CAR/ TC
991759/07	65X40-200C	CF3M	METHANOL FOR STORAGE	30° C		1.375"	CAR/ TC
991760/07	50X32-200C	CF3M	60% BY WL AQUIOUS UREA	65° C		1.375"	CAR/ SiC
991761/07	50X32-200C	CF3M	60% BY WL AQUIOUS UREA	65° C		1.375"	CAR/ SiC
991762/07	65X40-200C	CF3M	DEMINEALISED WATER	30° C		1.375"	CAR/ TC
991763/07	65X40-200C	CF3M	DEMINEALISED WATER	30° C		1.375"	CAR/ TC
991764/07	80x65-160C	CF3M	UREA FORMALDHYDE	35° C		1.375"	SiC/SiC
991765/07	80x65-160C	CF3M	UREA FORMALDHYDE	35° C		1.375"	SiC/SiC

M/s. I. D. P. C. – Saudi Arabia

PUMP NO.	TAG NO.	MODEL	MOC	FLUID	S. TYPE	SIZE	FACE
991415/05	P-33101 A/B	50x32-200	CF3M	METHANOL	8901	1.375"	CAR/TC
991416/05	P-33101 A/B	50x32-200	CF3M	METHANOL	8901	1.375"	CAR/TC
991417/05	P-33105 A/B	50x32-200	CF3M	DM WATER	8901	1.375"	CAR/TC
991418/05	P-33105 A/B	50x32-200	CF3M	DM WATER	8901	1.375"	CAR/TC
991419/05	P-33106 A/B	80x65-125	CF3M	FORMALDHYDE	8901	1.125"	SIC/SIC
991420/05	P-33106 A/B	80x65-125	CF3M	FORMALDHYDE	8901	1.125"	SIC/SIC
991421/05	P-33107 A/B	150x125-250 K	CF3M	FORMALDHYDE	8901	2.25"	SIC/SIC
991422/05	P-33107 A/B	150x125-250 K	CF3M	FORMALDHYDE	8901	2.25"	SIC/SIC
991423/05	P-33108 A/B	150x125-315	CF3M	FORMALDHYDE	8901	1.75"	SIC/SIC
991424/05	P-33108 A/B	150x125-315	CF3M	FORMALDHYDE	8901	1.75"	SIC/SIC
991425/05		32x25-180	CF3M	FORMALDHYDE	8901	1.125"	SIC/SIC
991426/05	P-68004 A/B	150x125-315	CF3M	COOLING WATER	9101	1.75"	CAR/TC
991428/05	P-68004 A/B	150x125-315	CF3M	COOLING WATER	9101	1.75"	CAR/TC

M/s. CHEMANOL – Jubail KSA

TAG NO.	MODEL	MOC	FLUID	TEMP.	HEAD	S. TYPE	SIZE	FACE
52211002	80X40-150	CF8M	D.M.WATER	AMB	30	9101	1.375"	CAT/TC
CP24-02 A/B P-05 A/B & P-06	80x50-200c-sp(1/4")	CF8M	D.M.WATER	44°C	70	9101	1.75"	CAR/TC
09 A/B	80X50-125C	CF8M	EFFLUENT OIL	35°C	31.25	8901	1.375"	CAR/SIC
	80X50-200CS	CF8M	D.M.WATER	50°C	65M	9101	1.75"	CAR/TC

M/s. DAYSTAR ENVIRO TECHNOLOGIES

PUMP NO.	TAG NO.	MODEL	MOC	FLUID	TEMP.	HEAD	SIZE	FACE
991942/08	P-1501 A/B	80x50-200	C1/WCB	EFFLUENTS	45° to 60°C	18.3	1.375"	SIC/SIC
991943/08	P-1501 A/B	80x50-200	C1/WCB	EFFLUENTS	45° to 60°C	18.3	1.375"	SIC/SIC
991944/08	P-1502 A/B	80x50-200	C1/WCB	EFFLUENTS	45° to 60°C	18.3	1.375"	SIC/SIC
991945/08	P-1502 A/B	80x50-200	C1/WCB	EFFLUENTS	45° to 60°C	18.3	1.375"	SIC/SIC
991946/08	P-1504 A/B	80x40-200	C1/WCB	EFFLUENTS	50°C	18.2	1.375"	SIC/SIC
991947/08	P-1504 A/B	80x40-200	C1/WCB	EFFLUENTS	50°C	18.2	1.375"	SIC/SIC
991948/08	P-1510 A/B	SP-3	C1/WCB	EFFLUENTS	40°C	30.2	1.5"	CAR/SIC
991949/08	P-1510 A/B	SP-3	C1/WCB	EFFLUENTS	40°C	30.2	1.5"	CAR/SIC



An ISO 9001-2015 Certified Company

Plot A-49B, T.T.C. Industrial Area, MIDC Mahape, Navi Mumbai - 400 710. India

Tel.: 97691 22842 / 97691 92843 / 98210 20774

Email: info@superflowpumps.com • Website: www.superflowpumps.com





An ISO 9001-2015 Certified Company

Plot A-49B, T.T.C. Industrial Area, MIDC Mahape, Navi Mumbai - 400 710. India

Tel.: 97691 22842 / 97691 92843 / 98210 20774

Email: info@superflowpumps.com • Website: www.superflowpumps.com





An ISO 9001-2015 Certified Company

Plot A-49B, T.T.C. Industrial Area, MIDC Mahape, Navi Mumbai - 400 710. India

Tel.: 97691 22842 / 97691 92843 / 98210 20774

Email: info@superflowpumps.com • Website: www.superflowpumps.com



**Performance Certificates from our Esteemed
Clients**



ISO / TS 16949:2002
AWARDED BY
RWTUV OF
GERMANY

EXIDE
INDUSTRIES LIMITED

Exide Works :
D2, M.I.D.C. Estate,
Chinchwad (East),
Pune 411 019.

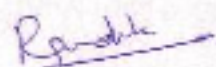
DATE:- 20.01.06

whomsoever it may concern

We have been using "Superflow " centrifugal chemical pumps for last four years at our Chinchwad plant & Bawal plant for pumping sulphuric acid.

All the pumps are working to our fullest satisfaction.

For Exide Ind. Ltd.


Asst. Manager

R.G. Karandikar



EXIDE
INDUSTRIES LIMITED


Plot No. 171, Sector-5
HSIDC Growth Centre,
Bawal-123001
Dist. Bawal, Haryana
☎ 01284-264045, 264118
☎ 01284-264125

DATE: 20.07.2006.

TO WHOMSOEVER IT MAY CONCERN

WE HAVE BEEN USING SUPERFLOW CHEMICAL PUMPS FOR PUMPING
SULPHURIC ACID SINCE 2003 WE FOUND THAT THE PUMP QUALITY IS
VERY GOOD & PUMPS ARE WORKING TO OUR FULL SATISFACTION.
PUMPS ARE OF CARTRIDGE TYPE AND IN ALLOY 20 CONSTRUCTIONS.

FOR EXIDE INDUSTRIES LTD. BAWAL (H.R.) PLANT,


(SUDH RANJAN BASAK)
MAINTENANCE & UTILITY ENGINEERS.



राष्ट्रीय केमिकल्स एण्ड फर्टिलाइजर्स लिमिटेड

(भारत सरकार का उपक्रम)

प्लॉट : प्रशासनिक भवन, चेंबूर, मुंबई - 400 074.

RASHTRIYA CHEMICALS & FERTILIZERS LIMITED

(Government of India Undertaking)

Works : Administrative Building, Chembur, Mumbai-400 074.

Phone : 022-5661455 Gram : FERTILIZER

Methanol Plant/OM

Date : 06/07/2006

To,
Managing Director,
M/s Superflow Pumps Pvt Ltd.
Plot No No. A-531, TTC Industrial Area
M.I.D.C., Mahape, Navi-Mumbai 400710.

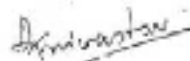
Dear Shri T.P.Tiwari.

Subject: Performance of Two numbers of Superflow Chemical Process Pump
Model 40 x 25 -150 for Pumping Lubricating Oil to our MUG
Compressor supplied against our Purchase Order No DC/ MD / 40616
Dated 03/03/2004.

*I would like to inform you that the subject pumps have been installed in our MUG
Compressor Lub Oil system during annual Shutdown April -2004. We found the
performance of Pump is very satisfactory. I would also like to mention that since the
inception of these two pumps they have given us trouble free service.*

*I would like to express my sincere gratitude for services, co-operation & support
extended by you at various times which proved to be very useful & appreciable for
Plant operations & Maintenance.*

*I expect from you, to maintain same high spirit of services, excellence as in past &
wish you very bright success in future supply and further business.*



(D.K.Srivastav)
Operation Manager
Methanol Gr. Of Plants
R.C.F.Ltd, Chembur, Mumbai-74






October 23, 2010

TO WHOMSOEVER IT MAY CONCERN

This is to certify that we have been using Pumps manufactured by Superflow Pumps Pvt. Ltd., and Mechanical Seals manufactured by M/s Super Mechanical Seals Pvt. Ltd., Mumbai, (India) for more than ten years in our Petrochemical Complex. We have found their products to be of excellent quality and at par with all other makes of Pumps/Seals worldwide.

For & on behalf of
METHANOL CHEMICALS COMPANY
(CHEMANOL)


P.R. Landge
PRESIDENT

شركة كيميائيات الميثانول
البيروت - 11511-11512
Methanol Chemicals Company
Ahsan Q. R. 22842/43/74

من شركة كيميائيات الميثانول - الشركة العامة للصناعات الكيماوية، صيدا - 11511-11512
P.O. Box 312, Damman 31421, Saudi Arabia, Tel: +966 3 358 2592, Fax: +966 3 358 2593
من شركة كيميائيات الميثانول - الشركة العامة للصناعات الكيماوية، صيدا - 11511-11512
P.O. Box 2101, Jubail 13151, Saudi Arabia, Tel: +966 3 358 1111, Fax: +966 3 358 0502
www.chemanol.com
شركة كيميائيات الميثانول - الشركة العامة للصناعات الكيماوية، صيدا - 11511-11512
A joint-stock company with paid up capital of SR. 1,200,000,000, C.R. No. 1005001371





ATEC

ANSHULA TECHNOLOGICAL ENGINEERING CONSULTANTS PVT. LTD.

Ref.: ATEC / CERT / V / 2011

Date: February 7, 2011

TO WHOMSOEVER IT MAY CONCERN

This is to certify that M/s Superflow Pumps Pvt. Ltd., Mumbai, India have been our regular duly pre-qualified and accredited vendor for rendering various services for execution of numerous projects undertaken by us on quasi turn-key and lump sum turn-key basis in India and abroad. The said services have included the following:

- 1) Detailed design / engineering / supply of rotating machinery including pump-motor sets and compressors etc.
- 2) Supply of mechanical seals and spare parts for rotating machinery.
- 3) Design / engineering / fabrication / supply of mild steel and stainless steel static vessels including separators, knock-out drums and reactors.
- 4) Piping design engineering (including preparation of piping layout plans, piping isometrics, flexibility analysis and bills of materials) and supply of piping materials inclusive of pipes, fittings, flanges, gaskets and other elements.
- 5) Liaison work and materials transportation services.

It is our pleasure to place on record the fact that the quality of workmanship and services provided to us by Superflow Pumps Pvt. Ltd. have been excellent meeting highest international standards.



Trinetra Bajpai
Managing Director (ATEC)

الشركة الخليجية للمواد الكيماوية المضافة
GULF STABILIZERS INDUSTRIES

Joint venture between Zamil Group Holding Co.
and Chemtura Corporation - USA



To Whomsoever It May Concern

This is to certify that we are using many Mechanical Seals of the make, "Super Mechanical Seals" in our Chemical Process plants. Mechanical Seals are supplied, serviced and repaired by M/S Husain H. Atwah Workshop (HATCO), Jubail, KSA. Urgent requirements are also manufactured at their workshop in Jubail.

We have also installed pumps of the make "Superflow Pumps" in our Chemical Process plant.

We have found the Mechanical Seals and Pumps to be of very good quality and at par with all other manufacturers in the world.

We congratulate M/S Husain H. Atwah Workshop for their excellent service and high quality in the all products supplied by them and expect them to keep up the good work.

For & on Behalf of

GULF STABILIZERS INDUSTRIES





Superflow Pumps Pvt. Ltd.™

An ISO 9001-2015 Certified Company

Plot A-49B, T.T.C. Industrial Area, MIDC Mahape, Navi Mumbai - 400 710, India

Tel.: 97691 22842 / 97691 92843 / 98210 20774

Email: info@superflowpumps.com • Website: www.superflowpumps.com



INDIA GELATINE & CHEMICALS LTD.

FACTORY : PLOT NO. 1-A, B.I.D.C. Industrial Estate, National Highway, VAPI - 395 195, (GUJARAT)

PHONE : (0280) 240 1584, 240 1385 Fax : (0280) 240 0795

E-MAIL : igclvapi@indigelatine.com

DATE : 15-10-2010

TO WHOMSOEVER IT MAY CONCERN

THIS IS TO CERTIFY THAT BEEN WE HAVE BEEN USING SUPERFLOW PUMP MODEL-SPP-80 X 40 -200 OF SUPERFLW PUMPS PVT LTD. NAVI MUMBAI SINCE 2008 AND THE PERFORMANCE OF THE PUMP HAS BEEN FOUND EXCELLENT. THEY HAVE SUPPLIED SPARES OF PUMPS ALSO AND THE QUALITY IS FOUND VERY SATISFACTORY. WE HAVE DECIDED TO PROCURE FUTURE PROCESS PUMP REQUIREMENTS FROM THE.

FOR INDIA GELATINE & CHEMICALS LTD.

GENERAL MANAGER
(R.J.KUMBHANI)

Head Office : 77/78, Mittal Chambers, 7th Floor, 223, Nariman Point, Box No. 11820, Mumbai - 400 021.
Tele : (022) 2202 0341 Fax : (022) 2284 5522 • E-mail: igclmumbai@indigelatine.com

Regd. Office : 703/704, "Shilp", 7th Floor, Near Municipal Market, Shesh C.G. Road, Navrangpura,
Ahmedabad - 380 009, (Gujarat) Tel. : 079 - 2648 6737, 2648 8514 • Fax : 079 - 2648 5569.



Vital Laboratories
Private Limited

PLANT : Plot No. 1710 & A1/2208, GIDC Estate.,

3rd Phase, VAPI - 398 195, Gujarat, India

Tele : +91-260-2424744-48 Mob : 9723432811/33

Fax No. : +91-260-2430587

E-mail: vitalab@vitalab.com website: www.vitalab.com

Date:- 16/10/10

To Whom It May Concern:

This is to certify that we have been using Super flow Pump Model :- SPP-25 X 25-130 of Super flow Pumps Pvt. Ltd., Navi Mumbai since 2006 and the performance of the Pumps has been found excellent. They have supplied spares of Pumps also and the quality is found very satisfactory. We have decided to Procure Future process pump requirements from them.

For Vital Laboratories Pvt Ltd.

G.M (Technical)


(V.K. Shrivastava)

TIN No. 09542801441

All Subject to Kanpur Jurisdiction

LAXMI OIL & VANASPATI PVT. LTD.

Regd. Office : 704, KAN Chambers 7th Floor 14/113, Civil Lines,
(Adjoining U.P. Stock Exchange Building) Kanpur-208 001
Factory : 97, Khan Chandpur, Near Umran Dhabba, Rania Akbarpur, Ramabal Nagar (U.P.)

Phone : 0512-2303169

0512-2303166

e-mail : laxmi2011@gmail.com

Date 22 Dec 2012

To Whom It May Concern:

That your Pumps performance are good & satisfactory supplied by you

Super Flow Pump Model No 40-25-200 J

For Laxmi oil & vanaspati pvt ltc



Authorised signature



National Company
for Sulfur Products
(closed joint stock)

شركة
المنتجات الكبريتية
المغلقة
للأسهم

Date: 10/11/2020

TO WHOMSOEVER IT MAY CONCERN

This is to certify that **M/S. Superflow Pumps Pvt. Ltd.** situated at Plot No. A-498 MIDC Mahape, Navi Mumbai 400710 India, has supplied pumps against our P.O. No. 006/16-17 dtd-17/01/2017. We found pump most reliable with Incredible Technology and Credible performance result.

We are quite happy with your prompt innovative technical solutions and unmatched services at our very crucial times in the plant.

We wish you a very high consistent growth in future all the years to come.

With Regards,

For, **National Company of Sulfur Products,**

Saudi Arabia


K. Sivasankaran
Plant Manager



National Company for Sulphur Products (closed joint stock) الشركة الوطنية لمنتجات الكبريت (مساهمة مغلقة)

TO WHOMSOEVER IT MAY CONCERN

Date: 8th March'18

This is to certify that **M/S Superflow Pumps Pvt. Ltd.** situated at Plot No. A-498 MIDC Mahape, Navi Mumbai 400710 India, has supplied us a **Vertical Molten Sulfur Pump** designed for 25m³/hr with 30mtr head.

The above pump has been put in service for over 6 months and found its performance very satisfactory.

We wish a great success for its future.

With Regards

For National Company of Sulfur Products,
Saudi Arabia.

K. Sivasankaran
Plant Manager



United Lube Oil Company

UNILUBE

A Closed Joint Stock Company



الشركة المتحدة لزيوت التشحيم

يونيلوب

شركة مساهمة مغلقة

To Whomsoever It May Concern

This is to Certify that M/s. SUPERFLOW PUMPS PVT. LTD. has supplied 6 Pumps confirming to API 610 OH2 type, through their Sister Concern M/s. HUSAIN H. ATWAH WORKSHOP (HATCO) at Al-Jubail, Saudi Arabia as per our P.O. No. APO-2015040002 Dated: 22-04-2015. We have installed these 6 Nos pumps in our Oil Refinery Plant.

We have found that these pumps are running trouble-free. Their quality is also very good. The pumps are performing at our utmost satisfaction.

We congratulate them for their outstanding success and wish them all the best.

Maintenance Manager





MEHK CHEMICALS PRIVATE LIMITED

(An ISO 9001:2015 Certified Company)

W-6, TTC Industrial Area, Pawane, Navi Mumbai - 400 719, Maharashtra, India.
T: +91-22-2768 2497 / 2761 4872 | E: admin@mek.in | W: www.mek.in
CIN No. : U24200MH1989PTC050545

Date: 26.05.2022

To Whomsoever it may concern

We are regularly procuring SUPERFLOW make Centrifugal Pump since 3 years for different applications.

These pumps are installed at our Pawane plant since last 3 years & it is our pleasure to put on record that the quality of products, workmanship & services provided by 'Superflow Pumps' have been excellent & meeting high standards.

We expect you to maintain same quality standards & workmanship in future supplies.

We wish you all the best for future business.

Authorized Signatory


25/05/2022
Sign & Stamp





Date: 15.04.2022

To Whomsoever it may concern

We have been using Superflow Make Chemical Process pumps from past 6 Years at our Muzaffarnagar Plant.

It is our pleasure to put on record that the quality of products, workmanship & services provided by 'Superflow Pumps' have been excellent & meeting high standards.

We expect you to maintain same quality standards & workmanship in future supplies.

We wish you all the best for future business.

Authorized Signatory

Sign & Stamp



CALYX CHEMICALS AND PHARMACEUTICALS LIMITED

CIN : U24220MH1986PLC038618

Factory : N-102, 91 & 90, MIDC, Tarapur, Boisar, Dist. Palghar - 401 506, Maharashtra INDIA.
Tel.: +91 - 2276045975 - 76 / 8446045617 • Fax : +91 - 22 - 6646 6426 • www.calyxindia.com

Date: 27.04.2022

To Whomsoever it may concern

We have been using Superflow Make Chemical Process pumps from past 2 Years at our Tarapur Plant.

It is our pleasure to put on record that the quality of products, workmanship & services provided by 'Superflow Pumps' have been excellent & meeting high standards.

We expect you to maintain same quality standards & workmanship in future supplies.

We wish you all the best for future business.

Authorised Signatory

Sign & Stamp



Registered Office :

Unit No. 110, Marwah's Complex, Krishantil Marwah Marg, Oil, Sakri-Vihar Road, Anilheri (East), Mumbai - 400 072, Maharashtra, INDIA.

BRANCH OFFICES

'SUPER' Group of Companies are extending their services to clients spread all over India through the following offices.

FOR GUJARAT & DELHI

Contact Person Mr. S. N. MISHRA (Regional Manager) Cell No. 09825304622

* ANKLESHWAR - F-15, RAVIRAJ APPARTMENT
NEAR OLD NATIONAL HIGHWAY,
ANKLESHWAR - 393 002
DIST. BHARUCH, GUJARAT.
TEL/FAX : 02646 - 238906 / 252975

* AHMEDABAD - MR. K. P. SINGH (Sr. Sales Engineer) Cell No. 09825304621
23, SANTDEV CO-OP HSG. SOCIETY,
RAMOL ROAD, JAMPALWADI,
C.T.M. AHMEDABAD (GUJARAT)

FOR MADHYA PRADESH, U.P. , BIHAR AND ORISSA

Contact Person Mr. I. N. MISHRA (Regional Manager) Cell No. 09826 013332

* INDORE - FLAT NO.102 'ASHIYANA'
180, SHRINAGAR MAIN ,
INDORE -I,(M.P.)
TEL/FAX : 0731 - 561261

FOR TAMIL NADU AND SOUTH INDIA

Contact Person Mr. AJESSH JOY (Sr. Sales Engineer) Cell No. 09840538032

* KERALA - PULLOLICKAL HOUSE,
MOTHER GARDEN, E.S.I-PUTHANKULAM ROAD,
THAIKATTUSERY-P.O.OLLUR, TRICHUR, KERALA-680306

FOR NAGPUR AND REST OF MAHARASHTRA

* NAGPUR Mr. VYAS TIWARI Cell No: 09167549744